

KITCHENS BEDROOMS & BATHROOMS

SEPTEMBER 2024 £5.99

THE ONLY
DEDICATED
KITCHEN, BEDROOM
AND BATHROOM
MAGAZINE IN
THE UK

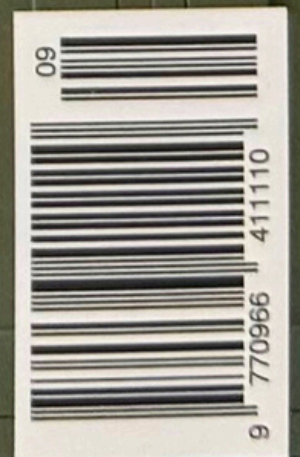
THE MAGAZINE FOR HOME REMODELLING, EXTENSIONS, LARGE RENOVATIONS AND INTERIORS ADVICE

KITCHEN PLANNING

FROM DEALING WITH DECISION FATIGUE AND CREATING DISTINCT
ZONES TO SPLASHING OUT ON SPLASHBACKS



INCLUDING
SEATING
IDEAS
FOR
YOUR
ISLAND



PLUS BATHROOM DESIGN QUESTIONS • HOTEL-INSPIRED BEDROOMS • BEAUTIFUL HOMES



LOOK UP

THE FACTS

Who Caroline and Felix Milns and their daughters
What Kitchen
Where Chiswick, West London
Design's focus
The family

W

A total refresh has given Caroline and Felix Milns' kitchen a new lease of life, while a custom ceiling has added rich detail and plenty of character. **Amelia Thorpe** reports

Photography **Anna Stathaki**

When Caroline Milns and her husband, Felix, bought their detached Victorian home in West London 11 years ago, they set about a major refurbishment. As directors of architectural and interior design practice and construction company Zulufish, and bespoke kitchen and joinery firm, Hux London, Caroline and Felix were well placed to undertake the project, although even *they* might have been daunted by the scale of the challenge. “The house was in an awful state – almost derelict,” recalls Caroline. “It had been inherited by two brothers, who were tempted to stay, but realised the project was just too much work.”

As their businesses were expanding, Caroline and Felix wanted to find a home with sufficient room to accommodate a large office – as well as plenty of space for family life with daughters Maisie, now 14, and Imogen, 12, as well as Wish, the Persian cat. Focusing on the house’s potential, the couple decided the renovation venture was worthwhile – and work began, including a full front-to-back basement dig out to make space for the office, complete with separate entrance. “Walls weren’t sound, floors were wonky and the roof needed replacing,” recalls Caroline. “We took the whole back off the house, so that only the two sides and front façade were left standing – at one point, it looked like the mine scene from *Indiana Jones and the Temple of Doom*.” As part of the project, they also added an extension to the rear, creating space for a large open-plan kitchen, dining and living space, geared to family life. “All the work has paid off,” she says. “It has given us a wonderful space.”

Fast forward ten years, and the couple decided that, while the layout of the kitchen carried on working beautifully, its décor needed a refresh after a decade of wear and tear – and to allow it to continue to be enjoyed as the heart of this busy family’s home. “As an interior designer, I enjoy developing new ideas and my taste has evolved,” says Caroline. “This time I wanted more of a detailed, maximalist look to suit the age of the

→



opening page The design for the new ceiling moulding was meticulously created by Caroline and crafted by *Stevensons of Norwich*, bringing in a layer of interest and detail to boost the character of the space.

above left The linear design of the ceiling moulding is echoed in the Modern Shaker cabinet doors.

above right, and left *Armac Martin* Crossways handles have a hexagon shape, as do the splashback mosaic tiles – adding another layer of detail.

right The reeded finish of the smoked eucalyptus veneer island adds texture to the room, while the curved profile of the island’s breakfast bar side brings in a little softness, as well as comfort for those sitting at the bar stools.

THE FACTS

Who Caroline and Felix Milns and their daughters

What Kitchen refurbishment

Where Chiswick, west London

Design Kitchen by *Hux London*; construction, ceiling and decoration by *Zulufish*

age The new ing was created by crafted by *Norwich*, a layer of detail to character of

the linear tiling hood Shaker

ac says hexagon

osaic tiles r layer

d looked er island he curved and's e brings s, as or those stools.



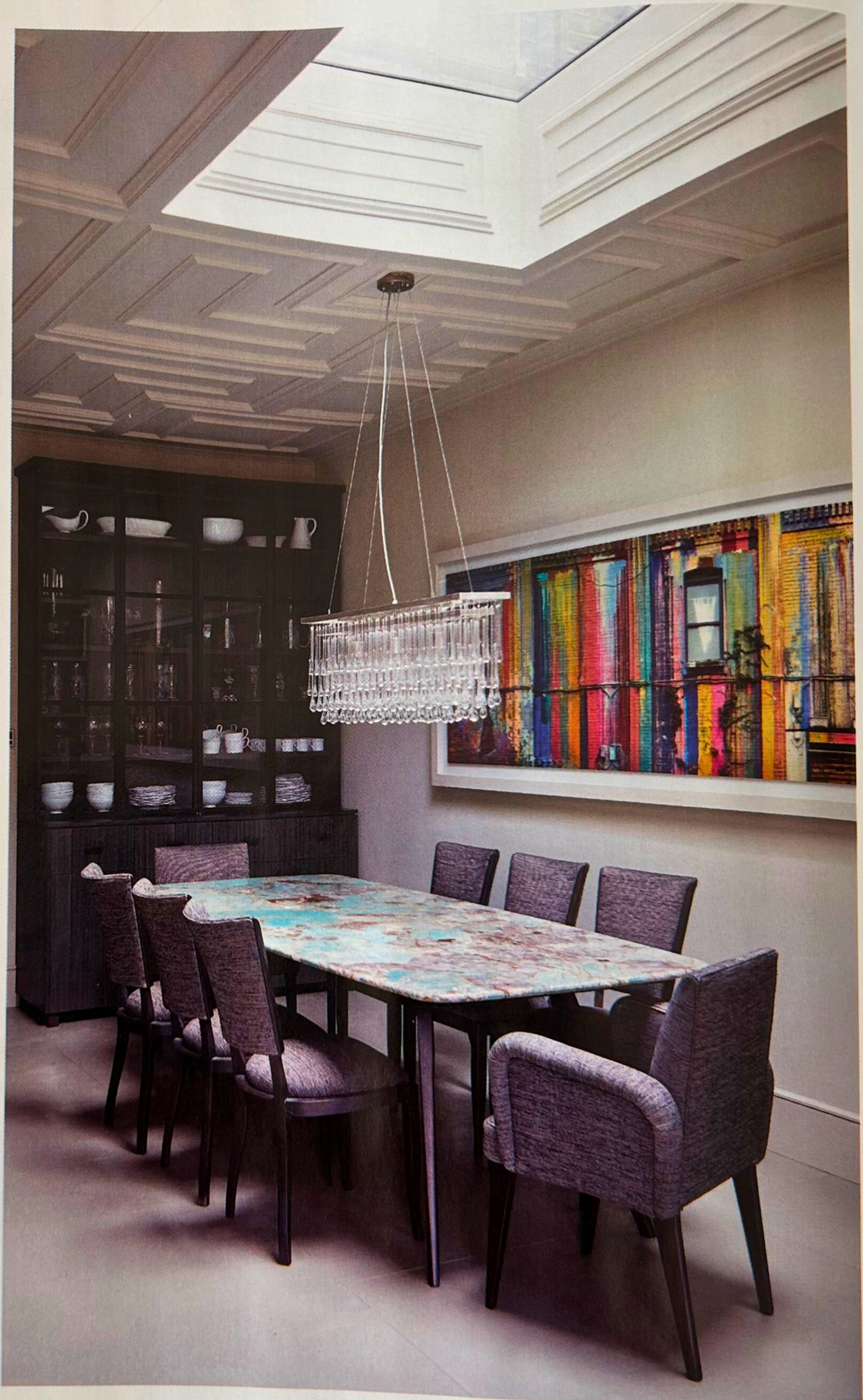
house, in contrast to the urban minimalism of before.”

Caroline began by designing a bespoke resin plaster moulded ceiling with a nod towards Art Deco style. “I wanted it to add character to the space and feel as if it had always been here,” she explains. Produced to Caroline’s design by plasterwork experts Stevensons of Norwich, such is the detail of the design – including panelled skylights – that it took two craftsmen five weeks to install. “I’m so pleased with the result,” she says. “It draws the eye upwards to accentuate the height of the room and adds a real sense of grandeur.”

The next step was to replace the doors to the kitchen cabinets with a fresh design: Hux’s bespoke Modern Shaker style, featuring slender frames with a stepped detail. “The doors, walls and ceiling are all painted in the same colour, creating a softly neutral backdrop that allows the detail of the ceiling moulding to shine,” explains Caroline. To add warm contrast and rich texture, the island is clad in reeded smoked eucalyptus veneer, its dark grey tones echoing those of the splashback. To complete the kitchen, worktops of Calacatta Brazil quartzite add natural beauty.

A new table forms the heart of the dining area. It is custom-made by Hux, featuring a stunning slab of Brazilian quartzite chosen by Caroline and Felix for its bright turquoise and soft pink hues, which pick up on the photographic print above. “The colours are so extraordinary – amazing to think it’s real stone,” says Caroline. Given the hefty weight of the stone slab, it is supported by a concealed metal frame including rods which run through the dark wood veneer legs of the table.

A new bar and re-upholstered sofa complete the inviting space. “The refresh has given the room a whole new lease of life,” says Caroline. “Now, it has wonderful layers of texture and detail, making it feel luxurious and special – and a lovely, welcoming place to entertain.”



“(THE CEILING) DRAWS THE EYE UPWARDS TO ACCENTUATE THE HEIGHT OF THE ROOM AND ADDS A REAL SENSE OF GRANDEUR”

left The contemporary dresser cabinet by *Hux London* stores glassware and china, its height designed to reflect the lofty proportions of the room. It's made from smoked eucalyptus veneer to match the island.

right and far right In the living area, the bespoke metallic, spray-painted bar by *Hux London* features curves, with Bronze mesh cupboard doors, Brass struts, Cohiba granite countertop and antiqued mirror back.

below The kitchen and dining areas lead on to soft seating for relaxing with family and friends. The disco ball used to hang in a Swedish nightclub. "Great for dancing after dinner," says Caroline. The sofa is vintage *Roche Bobois*. &

